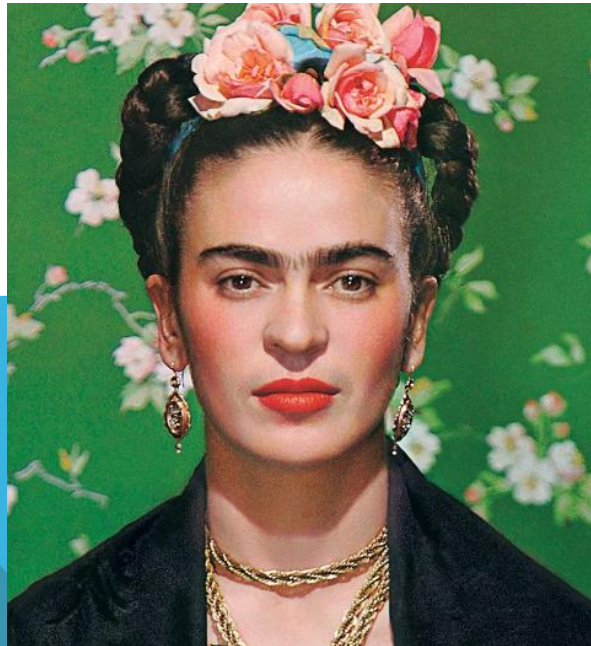


Artist of the Month
February 2024
Frida Kahlo



Frida Kahlo

Frida Kahlo was born on July 6th 1907 and died July 13th 1954.

Frida was born in a village just outside of Mexico City, Mexico, in 1907. When she was a child, Frida loved to draw. She preferred to spend hours on her own, being creative, rather than playing with her siblings.



An Accident



When Frida was 18, she was involved in a traffic accident. This left her with many injuries including broken bones in her spine, collarbone, ribs, pelvis, leg, foot and shoulder.

During her time in bed when recovering from polio and her accident, Frida would draw to pass the time.

She couldn't see very much from her bed, so she had a mirror placed on the ceiling so that she could see herself. Frida drew and painted a lot of self-portraits.



During her lifetime, Frida painted the diary of her life. She produced 151 paintings, 55 of which are self-portraits.



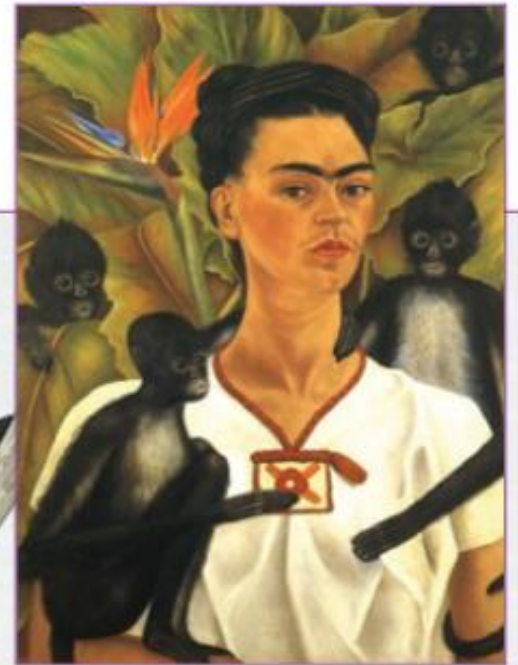


Self-Portrait Dedicated to Dr. Eloesser
Frida Kahlo

Self-Portraits

She used lots of bright colours in her self-portraits which reminded her of the vibrant colours of the hot country where she lived. Frida was very proud of her Mexican heritage.

She also included lots of tropical flowers and animals, such as monkeys and birds.



FRIDA KAHLO





Self-Portrait with Monkeys
Frida Kahlo

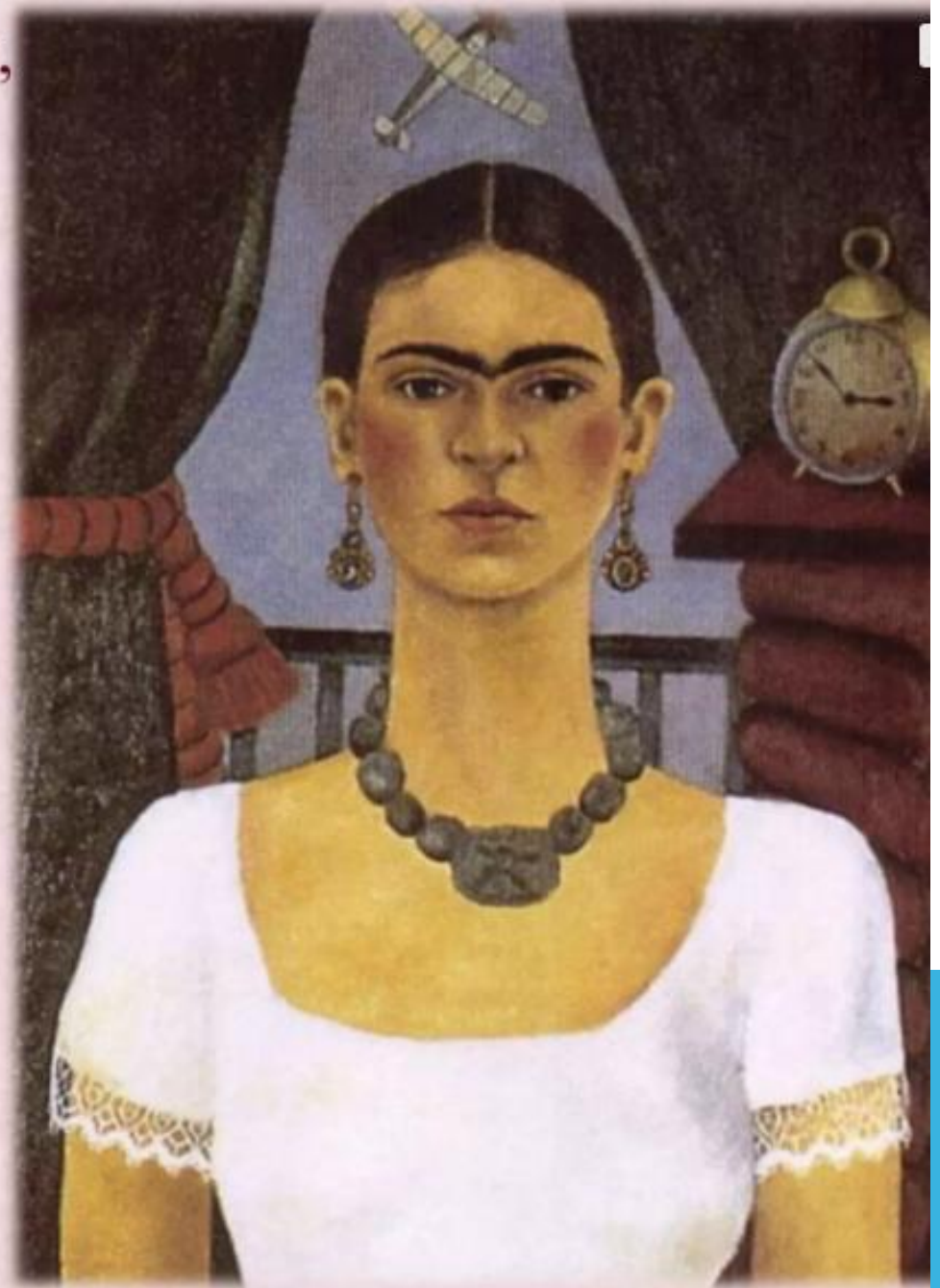


Self-Portrait



Kahlo's first self-portrait was **“Self-Portrait in a Velvet Dress”** in **1926**.

In her second-self portrait, **“Time Flies”** painted in 1929, Kahlo used a folk style and vibrant colors.



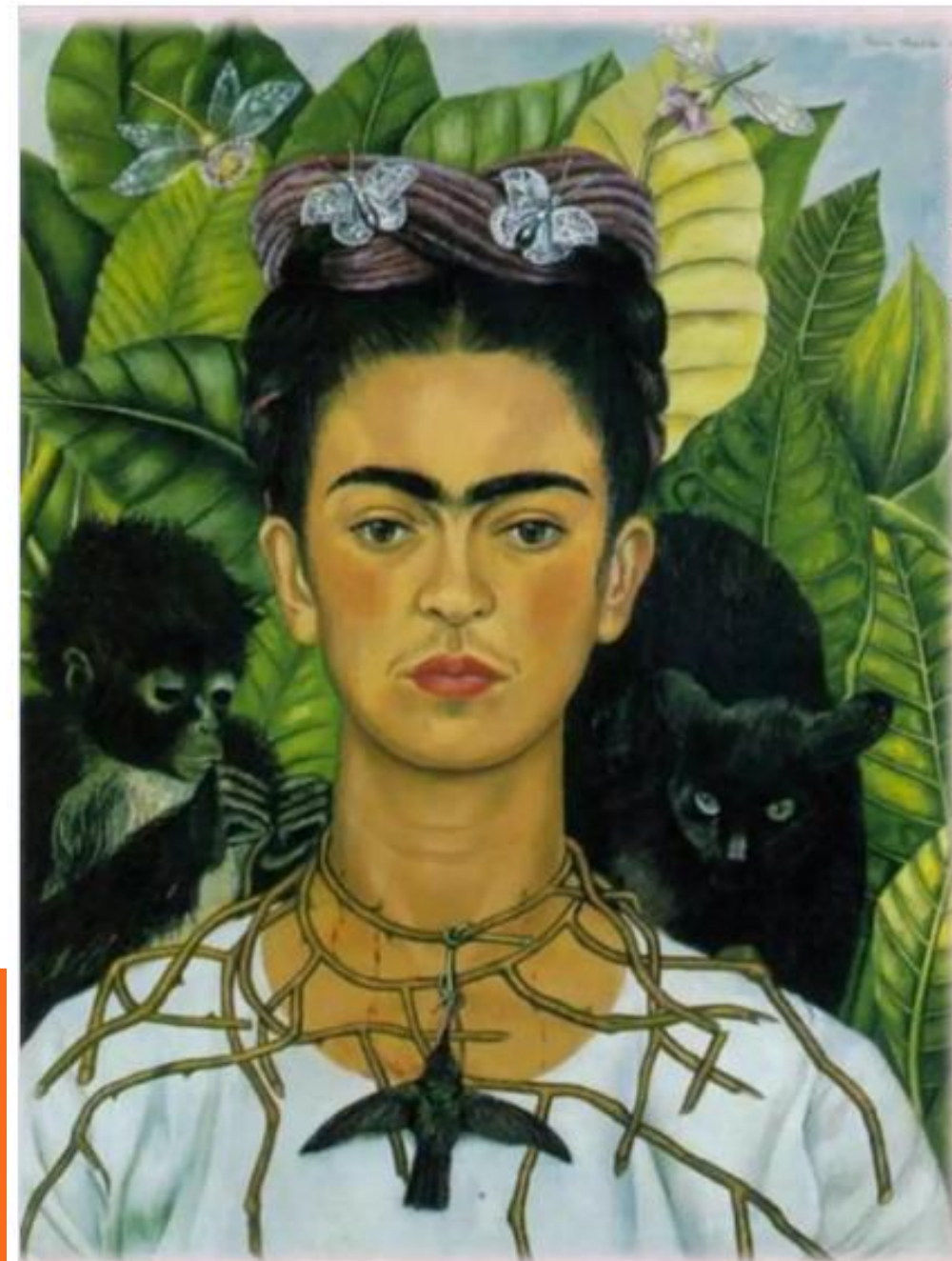
The Two Fridas

- 1939





This painting, **“Self-Portrait with Thorn Necklace and Hummingbird”**, was painted by Frida Kahlo in 1940. It is considered to be the most famous self-portrait by Frida.



FEBRUARY – FRIDA KAHLO - SELF PORTRAITS

Art Task - Self Portraits

- draw your face – look in a mirror to help you
- add things around the outside that interest you

Frida used nature, animals



Art Task - Self Portraits

- you can use paints, colouring pencils, felt tips or crayons.





At Springdale, we are going to be having an Artist of the Month. Each month, you will receive some information about a different artist and an “arty” task to do related to that artist. This will be for you to complete at home if you wish. You will then bring it into school and your artwork may be displayed on our hall display.